

Welcome to Year 5



Staff

- Mrs Mitchell and Mrs Withers (Mrs Amin) – Year 5 Class Teachers
- Miss Myring – Year 5 Teaching Assistant
- Mrs Lamb – Reading support

General Class Information

- School starts at 8:55 am. Any children coming into school after 9:00 am will be given a late mark.
- Appointments can be made to see your child's class teacher straight after school (except Wednesday due to staff meetings.) This is a more convenient time for teachers, rather than in the morning when the children are coming into school.
- Dinner money is collected on a Monday morning. It would be helpful if this was in an envelope labelled with your child's name. We would encourage children to stay on either a packed lunch or school meal for half a term if possible.
- Thank you for maintaining the high standards in school uniform, all the children look very smart.
- An attendance award will be given to the junior class that has the highest percentage attendance each week.

A Typical Day in Year 5

- Guided Reading Session
- Maths lesson including mental Maths
- English lesson
- RE
- Afternoon lessons – Science/
History/Geography/Music/PE/Art/Spanish/
PSHE

Curriculum Topic Areas

Science	History	Geography
Forces	Ancient Greece	Mountains and Earthquakes
Earth and Space	Vikings	Comparing a European country to the UK.
Living things and their habitats		Arctic and Antarctic Circles
Material Properties		Mapping/fieldwork skills will run across all geography topics
Material Changes		

Reading

- Children will complete weekly guided reading sessions. Focussing on skills such as: comprehension, questioning, key features of different texts and authors use of language.
- Every child will have a yellow reading record book to record home reading.
- They will be expected to read 15 pages (minimum) per week.
- Reading 3 or 4 pages per night would be beneficial.
- This will be monitored every week. The children can independently change their book when needed.
- Please sign and date your child's diary when they have read or when they require a new book.
- If it is noted that anyone is not reading at home, parents will be contacted.

Tips for reading at home

- Sometimes 'less is more'
- Ask lots of questions to check recall, comprehension and inference skills
- Explore new vocab and try and use it in your spoken language
- Explore the effect of language choices. What language is powerful? Why?
- Explore the meaning of figurative language

The battleground was 'a sea of green'

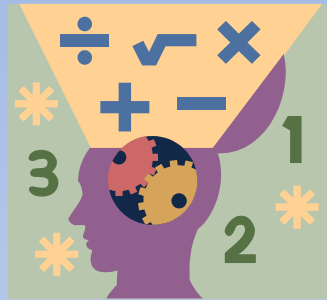
Homework

- Please complete in either blue handwriting pen or pencil.
- 30 minutes (max) to be spent on each piece of homework.
- If after 30 minutes your child is finding their homework particularly difficult, sign it and their class teacher can address any difficulties.
- If circumstances prevent the completion of homework, a letter from a parent will excuse the child. The homework task may be set for another evening.
- Parents are to sign each piece of homework to ensure it has been checked.
- The calculation policy is available on the school website.

English

- English Spelling homework will be given out on **Friday** along with a set of spellings.
- Homework is due in the following **Friday**.
- A spelling test will take place on the following **Friday**.
- As well as weekly word lists, your child will have additional spellings taken from the New National Curriculum.
- On most occasions, homework will be linked to spellings, but sometimes a different Literacy task may be given instead.

Maths



- Maths homework will be given on **Friday** and should be completed by the following **Tuesday**. This could be in the form of a Maths activity sheet or 'Abacus'/RM EasiMaths online.
- The children will practise their times tables every week with a focus on rapid recall of facts including division facts.
- If your child doesn't know their times table facts to 12 x 12, please could you find time to practise at home.

P.E.

- The children will have P.E. twice a week on a **Wednesday** and **Friday**.
- The children will need their **full P.E. kit** in school on both days.
- The **Wednesday** lesson will be Games and will take place outside. Children will be able to wear trainers for these lesson and during the Winter time, tracksuits can be worn over P.E. kits. **Friday** lessons will be indoor.
- P.E. Kits must remain in school and are to be taken home every half term holiday to be washed.
- PE Kit: White T-shirt, Blue or Black Shorts, Black Pumps.
- Please ensure P.E. kits are returned on the first day of a new half term and have your child's name in.



Project



- The children will be asked to complete a written project during the Summer Term.
- More information will be given at a later date.

Music



- As well as peripatetic music classes that are offered across the school, Children in Year 5 will have the opportunity to learn how to play the violin on **Fridays**.
- Children take their violins home after the lesson and they must be returned to school the following **Thursday**, ready for the next lesson
- J6 September – February
- J5 February – July

Medical

- All inhalers/medication is to be signed in (school office) and clearly labelled.
- Medication forms available from the school office.
- Children can access their inhalers in class whenever they need to.



RE

- In Holy Rosary we follow the 'Come and See' curriculum for RE.
- Children will study a range of topics based around the church calendar.
- Class assemblies will take place during the Autumn term.



How you can help?

- Ensure completion of all homework.
- Test what has been learnt.
- Encourage reading for enjoyment.
- Explore and use new words when reading.
- Promote independent research.
- Practise times tables.
- Practise weekly spellings and how the word would be used in a verbal sentence.
- Practise the time in both analogue and digital forms.

Thank you!

This PowerPoint presentation will be available, along with any other school information, from our school website.

www.holyrosaryschool.co.uk